



Gumeracha Primary School



Gumeracha History

1857

The first Gumeracha School was opened in a building in Wellington Street.

1913

The school shifted to its present site when the new activity room building was built. Because of the outbreak of World War 1 and the death of the then Director of Education, the building was never officially opened.

1940's

The School bell, donated by the Lee family. It came from a shipwreck off the coast of Devon, wherein a member of the Lee Family lost his life. The ship's bell was sent to his family in Kenton Valley.

1970

Cudlee Creek school was closed and consolidated with Gumeracha

1977-78

A student competition was held and the winning sketch was further developed by the then clerical assistant, Elizabeth Bullen, to the current design as depicted in the top left hand corner of this screen.

1994

work commenced to prepare the sites for 4 more classrooms. Our School logo "Together We Achieve" was produced by Dorothy Evans in December

1800 - 1910

1911 - 1920

1921 - 1930

1931 - 1940

1941 - 1950

1951 - 1960

1961 - 1970

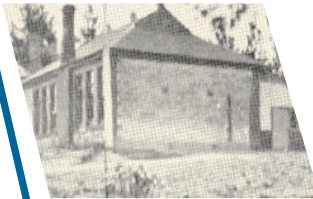
1971 - 1980

1981 - 1990

1991 - 2000

2001 - 2010

2011 - 2020



1914

The students and teachers marched through the streets of Gumeracha from the former to the new school on top of the hill.



1933

The Kenton Valley School was consolidated to Gumeracha and the wooden school building was quartered and shifted to our school site where it served as a classroom and finally as an office.



1965

Forreston school was closed and consolidated with Gumeracha

In 1982 work commenced on the redevelopment of the school - with children accommodated in a series of portable classrooms on the existing school oval while the work took place. This work was completed, and officially opened in October 1983.

1982-83

About Us

Gumeracha Primary School is a small school located in a semi-rural environment approx 40km from Adelaide. As such, the school has a strong environmental education focus with many programs such as recycling, revegetation and local projects being supported within the school and local community.

The school motto, 'Together we achieve', reflects the highly valued parent involvement in school programs and the school's involvement in community activities. The school's values build on a commitment to achieve and include confidence, persistence, organisation, resilience, getting along and creativity.

Curriculum priorities are literacy and numeracy, along with the integration of Information and Communication Technology. The 'Jolly Phonics' program is used to provide strong beginnings in literacy in the Early Years and the highly acclaimed 'Primary Connections' Science program underpins the Science curriculum. Furthermore, we develop higher-order thinking strategies with students R to 7 and students are encouraged to participate in decision-making through class meetings and the Student Representative Council. Global and multicultural education was introduced as a specialist subject in 2008 with a focus on Asia.

Interactive whiteboards are located in each classroom and in our well-resourced computer suite. A recently renovated Resource Centre, a new multi-purpose hall and a fully equipped Art/Science Room provide additional, high quality learning areas. Large, picturesque grounds, a shaded, paved amphitheatre and modern, shade-covered play areas offer scope for a range of outdoor activities. The school is an Instrumental Music Hub which sees students from local schools meeting once a week to develop band skills; private piano tuition is also available during school time. The school has a Christian Pastoral Support Worker who encourages the wellbeing of students and is a resource for staff and families. Outside School Hours Care and Vacation Care programs are available.

